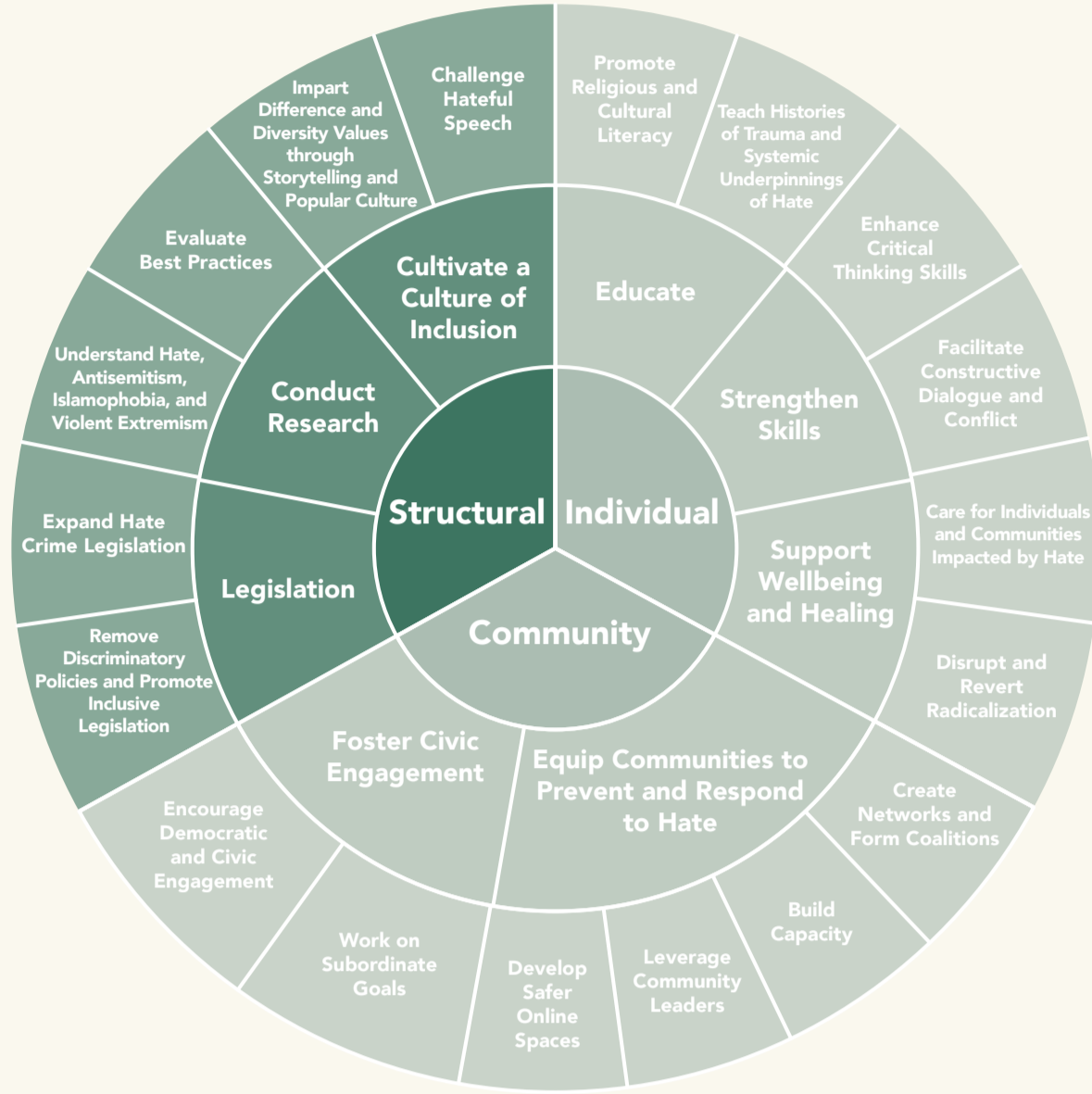


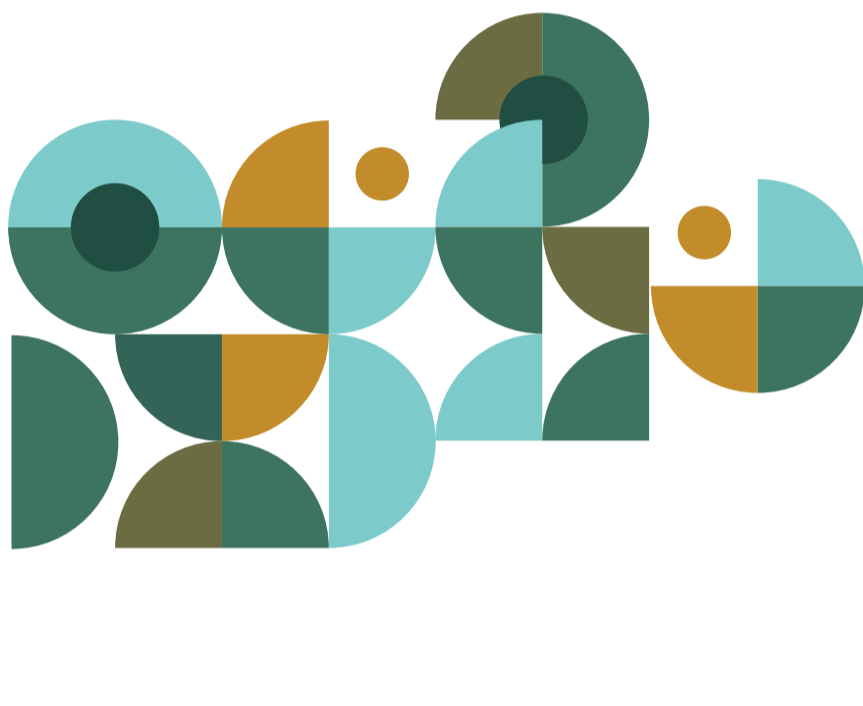


Structural and Institutional Approaches

Organizations operating at the structural level aim to achieve enduring change related to Antisemitism and Islamophobia by influencing policies and broad-level change. Instead of focusing on directly modifying individual attitudes, beliefs, or behaviors, or fostering a sense of belonging within community or developing networks of local organizations, they target changes at the policy or cultural level. Their approaches include ensuring just governance and inclusive legislation, developing research that can motivate institutional change, evaluating the impact of interventions, and cultivating a mass culture that sees intolerance as unacceptable.



Cited Strategies and Practices: Structural Level



Legislate

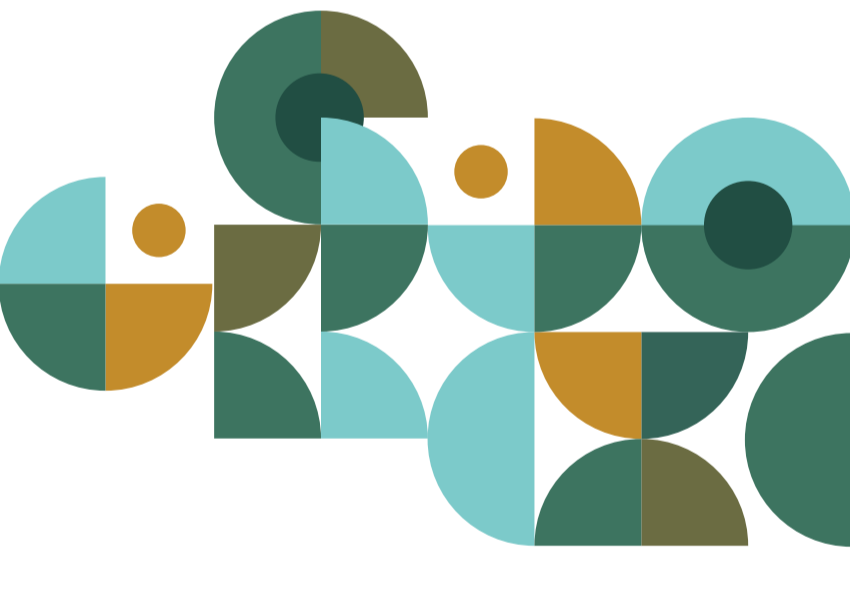
Inclusive institutional policies and legislation can encourage a culture that respects and appreciates religious and cultural diversity, whereas discriminatory and unjust policies can embolden intolerance and prejudice in both communities and organizations. Many organizations work to lobby against discriminatory policies and legislation and in favor of inclusive policies in both organizations and local, state, and federal government.

REMOVE DISCRIMINATORY POLICIES AND PROMOTING INCLUSIVE LEGISLATION

- Ensure that laws and practices do not interfere with the freedom of religion
- Develop a legal framework that can be used to challenge laws in different states
- Leverage executive branch actions and authorities
- Counter infiltration in military, veteran, and law enforcement communities
- Employ financial and technological tools and authorities
- Develop policies and fund programs to support the security of places of worship

EXPAND HATE CRIME LEGISLATION

- Recognize crimes as hate crimes and prosecute them as such
- Bring together Muslim and Jewish communities to address shared policy
- Lobby local governments to enact changes
- Track civil rights violations in addition to hate crimes



Conduct Research and Evaluation

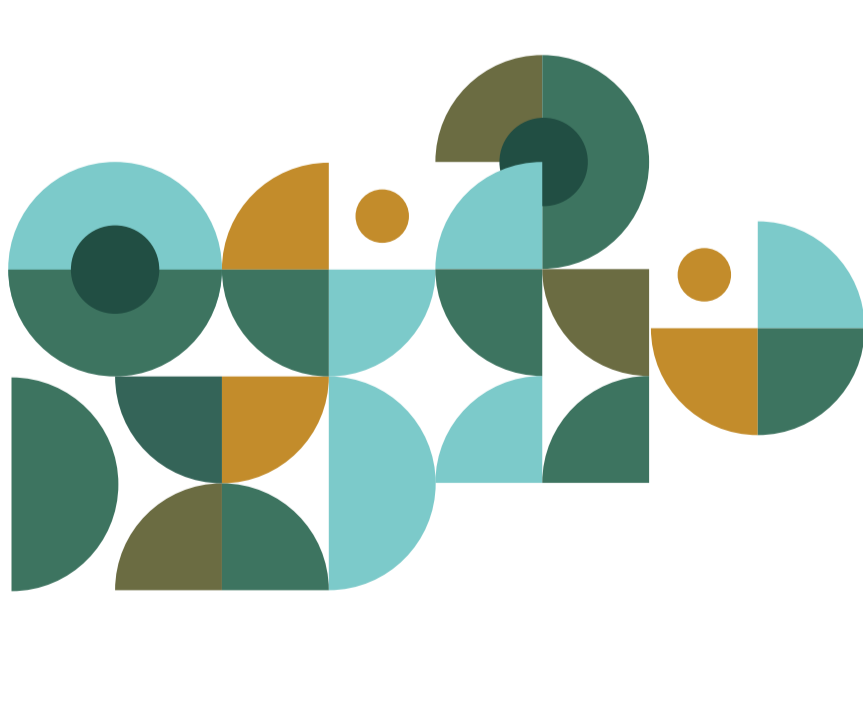
Inclusive institutional policies and legislation can encourage a culture that respects and appreciates religious and cultural diversity, whereas discriminatory and unjust policies can embolden intolerance and prejudice in both communities and organizations. Many organizations work to lobby against discriminatory policies and legislation and in favor of inclusive policies in both organizations and local, state, and federal government.

UNDERSTAND HATE, ANTISEMITISM, ISLAMOPHOBIA, AND VIOLENT EXTREMISM

- Disseminate findings through public education campaigns
- Work with stakeholders to encourage evidence-based decision-making
- Conduct research projects to understand the key predictive factors of hate
- Evaluate the ability of interventions to address predictive factors
- Monitor and map political violence and responses to political violence

EVALUATE BEST PRACTICES

- Build evaluation capacity through networks of practitioners and training
- Ensure methodological rigor in survey design and administration
- Measure changes in knowledge and psychosocial experience over time
- Identify both the strengths and the weaknesses of projects and programs
- Use free tools to evaluate the impact of projects using pre-post survey testing
- Use randomized controlled trials and quasi-experimental methods



Cultivate a Culture of Inclusion

Inclusive institutional policies and legislation can encourage a culture that respects and appreciates religious and cultural diversity, whereas discriminatory and unjust policies can embolden intolerance and prejudice in both communities and organizations. Many organizations work to lobby against discriminatory policies and legislation and in favor of inclusive policies in both organizations and local, state, and federal government.

IMPART DIFFERENCE AND DIVERSITY THROUGH STORYTELLING AND POPULAR CULTURE

- Depict generative conflict in media
- Introduce people to the issues via stories rather than prescriptive education
- Encourage the entertainment industry to share stories that bridge divides
- Tell stories of American Muslim and Jewish contributions to the country

CHALLENGE HATEFUL SPEECH

- Defend victims of hate speech by being loud about the incident
- Unpack the strategies of individuals and organizations that are harming others
- Organize with communities that are at risk of being targeted for violence
- Call on elected officials to reject antisemitic and Islamophobic rhetoric
- Inform communities on how to keep themselves safe
- Organize education programming on media literacy and bystander intervention
- Ensure there is a clear and known policy that bans hateful speech at schools
- Speak out when bigotry occurs at school and ensure that bigots are not invited to speak
- Create a positive culture through inclusive student groups and sharing stories of belonging

